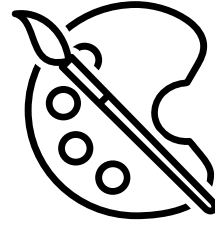


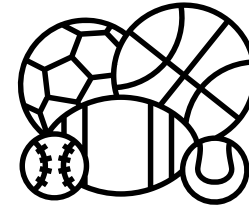
SUBJECTS

M E N G L I S H M K
 C A X Q X E W G I T
 E R T C W Z Y E X P
 M T B H V R C O H V
 V U L V O N R G H E
 E N S T E . T R R T
 Z G S I E I U A N D
 M I C . C U O P W F
 H S P T E C W H N T
 C Q T . Z I E Y E I

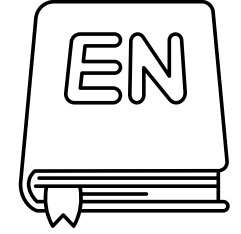
Look at the pictures and write the missing letters.



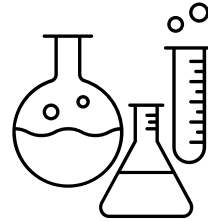
_ R _



_ . _



_ _ L _ _



_ _ E _ _



_ _ G _ P _ _



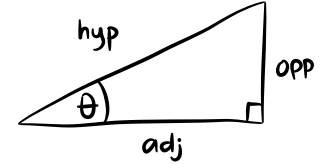
_ M _ _ _



I . _



_ I _ _ _



$$\sin(\theta) = \frac{\text{opp}}{\text{hyp}}$$

_ _ _ H

- Geography
- P.E.
- English
- Music
- Science
- Art
- History
- I.T.
- Math

• Which subject do you like the most?

I like

• What is the most difficult subject?

..... is the most difficult subject.

Write and draw your favorite subject.